

COPYRIGHT 2018 GALLO HERBERT ARCHITECTS

ALL RIGHTS RESERVED. NO PART OF THIS DOCUMENT MAY BE REPRODUCED OR TRANSMITTED IN ANY FORM OR BY ANY MEANS, ELECTRONIC OR MECHANICAL, WITHOUT PERMISSION IN WRITING FROM GALLO HERBERT ARCHITECTS.

ALL FIRE ALARMS, EMERGENCY LIGHTS, SIGNALS, SMOKE DETECTORS, PULL STATIONS, HOVNS, SMOKE DETECTORS, AND FIRE EXTINGUISHERS SHALL BE INSTALLED AS REQUIRED BY THE FINAL LOCATION TO BE APPROVED BY ARCHITECT.

PZ25-12000022
11/05/2025

ALL FLOORING MATERIAL SHALL BE NON-SLIP.

4. ALL FIRE RATED OR SMOKE PROOF WALLS AND PARTITIONS SHALL BE IDENTIFIED AT CEILING AS PER SECTION 712.5 "FIRE AND SMOKE BARRIER PROTECT ALL OPENINGS".

5. ALL CLOTHES DRYER SHALL HAVE BLOWERS AS REQUIRED IN ORDER TO PREVENT LINT FIRES.

6. 1/2" MAX. THRESHOLD @ ALL EGRESS DOORS.

7. FIRE EXTINGUISHER SHALL BE PLACED AS REQ. THROUGHOUT BUILDING. ENSURE THAT ALL SURFACE MOUNTED FEC ARE LOCATED NO HIGHER THEN 27" AFF. MEASURED FROM THE BOTTOM EDGE OF THE CABINET. FIRE PROTECTION SUBCONTRACTOR SHALL SUBMIT VIA SHOP DRAWING PROPOSED TYPE AND LAYOUT FOR PORTABLE FIRE EXTINGUISHERS MEETING ALL REQUIREMENTS OF NFPA 10, NFPA 101 AND THE FBC.

8. POSTING OF OCCUPANT LOAD. EVERY ROOM OR SPACE THAT IS AN ASSEMBLY OCCUPANCY SHALL HAVE THE OCCUPANT LOAD OF THE ROOM OR SPACE POSTED IN A CONSPICUOUS PLACE, NEAR THE MAIN EXIT OR EXIT ACCESS DOORWAY FROM THE ROOM OR SPACE. POSTED SIGNS SHALL BE OF AN APPROVED LEGIBLE PERMANENT DESIGN AND SHALL BE MAINTAINED BY THE OWNER OR AUTHORIZED AGENT.

9. PROVIDE PANIC HARDWARE @ ALL STAIR DISCHARGE (TYP).

10. PROVIDE KEY ACCESS TO ROOF & KEY LESS RE-ENTRY FROM ROOF.

COMMON AREA BUILDING

1. COMMON PATH = 50'-0"
2. EXIT ACCESS TRAVEL DISTANCE = 325'-0"
3. DEAD END CORRIDOR = 50'-0"

DWELLING UNITS

MAXIMUM OCCUPANT LOAD = 6
MAXIMUM EXIT ACCESS TRAVEL DISTANCE = 75'-0"
DEAD END CORRIDOR = 50'-0"

MINIMUM CORRIDOR WIDTH

1. CORRIDOR = 44" MINIMUM
2. DWELLING UNIT = 36" MINIMUM

SEE AREA CALCULATIONS ON G-001 CODE DATA.

SEE A-603 FOR EGRESS CLASS OF FINISHES

1/4" = 1'-0"

0 2' 4' 8'

1/8" = 1'-0"

0 4' 8' 16'

LIFE SAFETY NOTES

LIFE SAFETY SYMBOL LEGEND

Mark	Description
-----1HR-----	1 - HOUR FIRE RATED WALL
-----2HR-----	2 - HOUR FIRE RATED WALL
● - - - ->	DIRECTION OF TRAVEL
Ⓜ Ⓜ	ILLUMINATED EXIT SIGN DIRECTIONAL INDICATOR / NO MORE THAN 100' APART FBC 1030
☐FE	PORTABLE FIRE EXTINGUISHER 2A: 10B: C TYPE, SEMI-RECESSED MOUNTED @ 4'-6" A.F.F. INSTALLED IN SEMI-RECESSED CABINET W/4" MAX. PROJECTION FROM WALL
KB ☐	FIRE DEPARTMENT KNOX BOX PER CITY SPEC
AED ☐	AUTOMATIC EXTERNAL DESIBRILLATOR 1st,3rd, 5th & 7th FLOORS
SBK ☐	STOP THE BLEED KIT 1st,3rd, 5th & 7th FLOORS

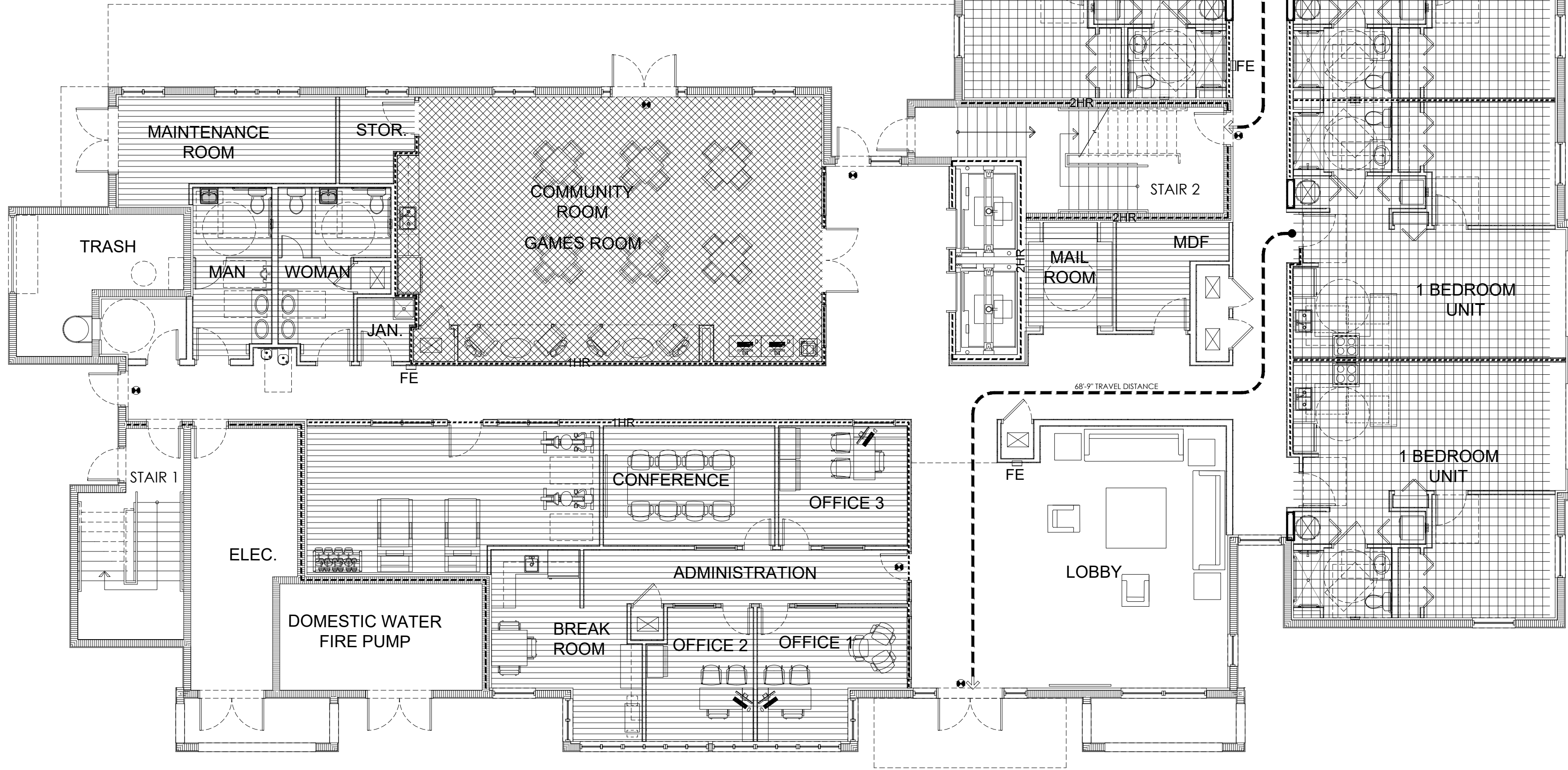
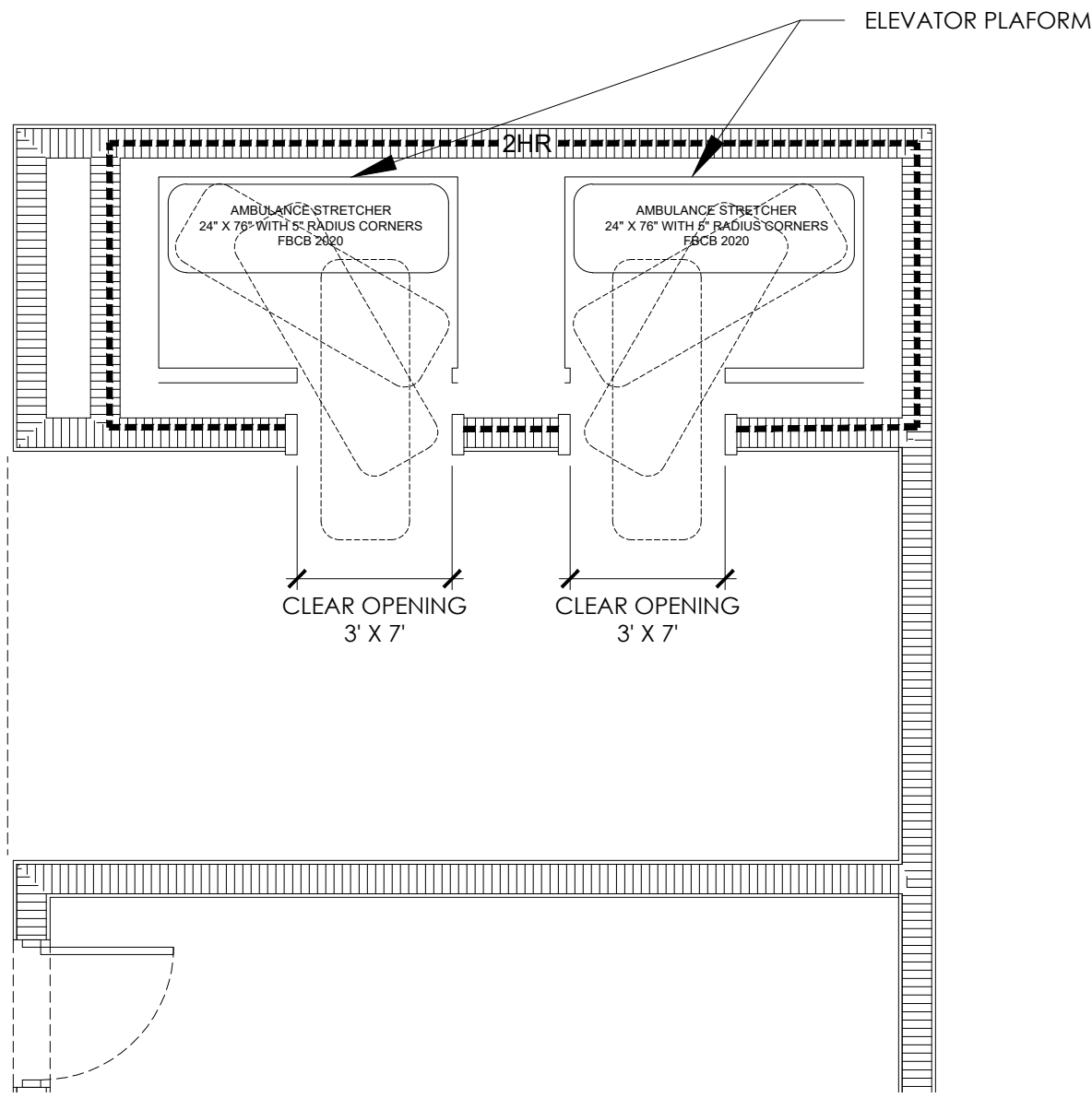
OCCUPANCY LEGEND

	BUSINESS GROUP B
	ASSEMBLY GROUP A-3
	RESIDENTIAL GROUP R-2

ELEVATOR CAR TO ACCOMMODATE AMBULANCE STRETCHER

1/4" = 1'-0"

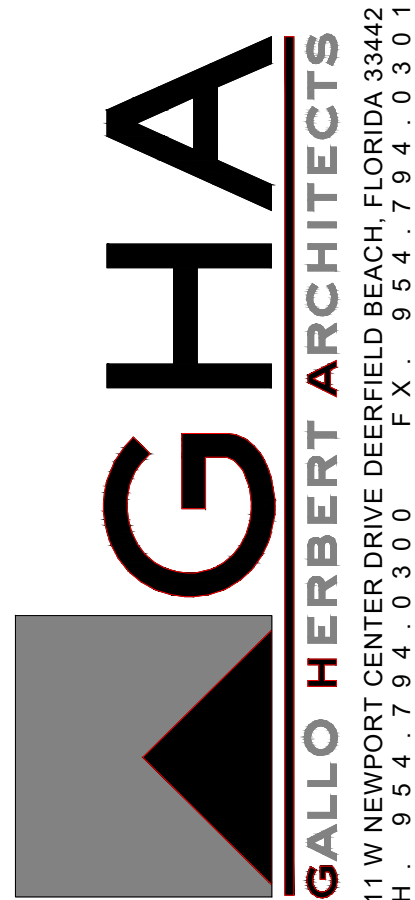
0 2' 4' 8'



FIRST FLOOR LIFE SAFETY PLAN

1/8" = 1'-0"

0 4' 8' 16'



AA26001731
[SEAL]
WILLIAM J. GALLO FL AR0008440

BRIAN P. HERBERT FL AR0015474
[PROJECT]

90 UNITS
ASPIRE 1650

NW 30rd AVE - BLOUNT Rd.
POMPANO BEACH, FLORIDA

No.	Description	Date

PROJECT STATUS
DRC
DATE
08-22-2025
PROJECT NUMBER
49-2023
SCALE
AS SHOWN

DRAWN BY
CMR
CHECKED BY
BPH
DRAWING TITLE
LIFE SAFETY PLAN

DRAWING NUMBER
G-101